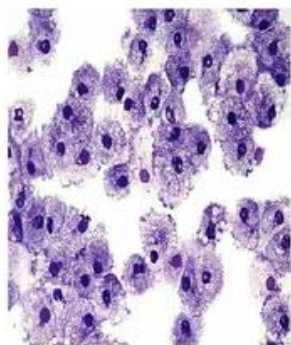


8 Science Cells test

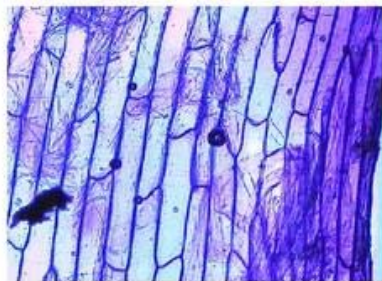
Question Prompt: 1

Total Points: 1

Examine the photograph attached and choose the correct answer from those below.



Cells A



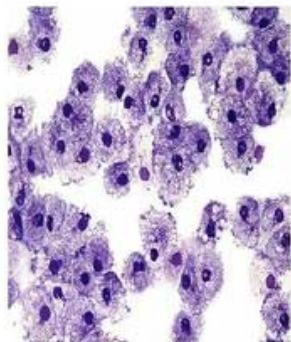
Cells B

- Cells A are plant cells, Cells B are animal cells
- Cells A are animal cells, Cells B are plant cells
- Cells A and B are both animal cells
- Cells A and B are both plant cells

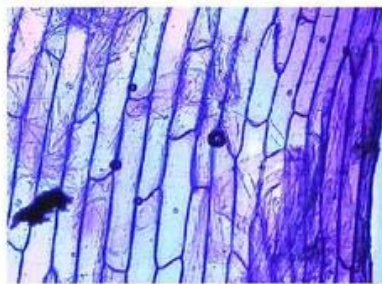
Question Prompt: 2

Total Points: 1

Use the same photograph you saw in question 1 to answer the following. State clearly one piece of evidence that allowed you to make your decision about whether Cells A and Cells B were plant or animal cells.



Cells A



Cells B

Question Prompt: 3

Total Points: 3

Points per answer: 0

Animal cells do not have cell _____ or c _____. They are usually _____ than plant cells.

Question Prompt: 4

Total Points: 3

Points per answer: 1

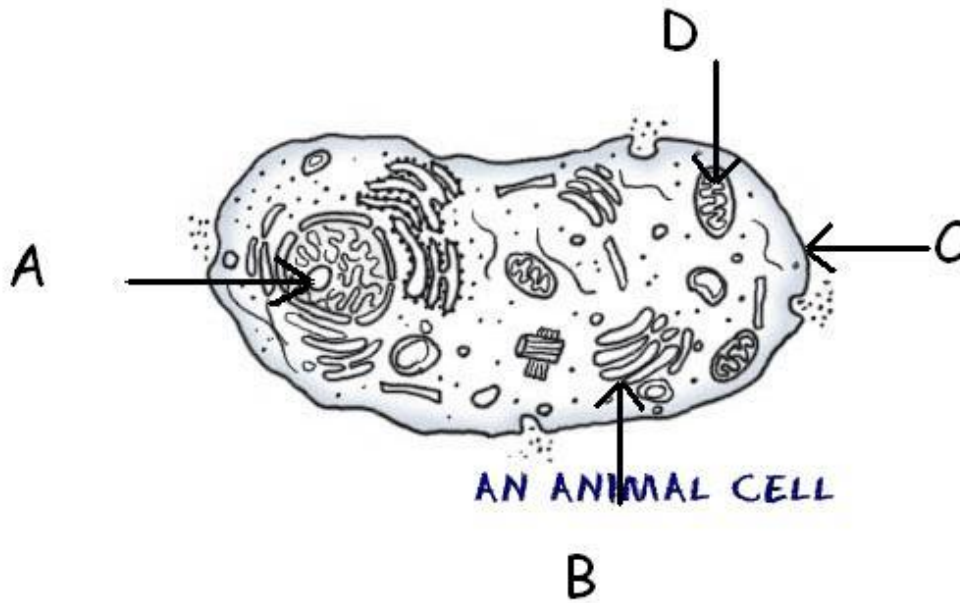
Match each letter with the correct answer.

- | | |
|--|-----------------|
| A. Plant Cells have | 1. Chloroplasts |
| B. Plant and animal cells have | 2. Mitochondria |
| C. Animal cells are not rigid as they don't have | 3. Cell walls |

Question Prompt: 5

Total Points: 1

Use the attached diagram to choose the correct statement about the animal cell

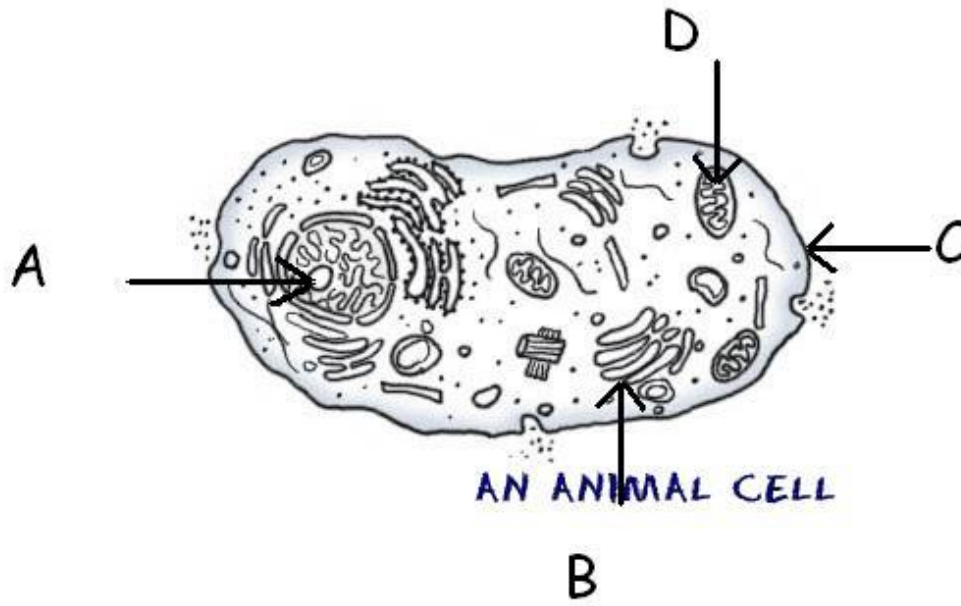


- Part A are Golgi structures
- Part B are Golgi structures
- Part C are Golgi structures
- Part D are Golgi structures

Question Prompt: 6

Total Points: 1

Use the attached diagram to choose the correct statement about animal cells

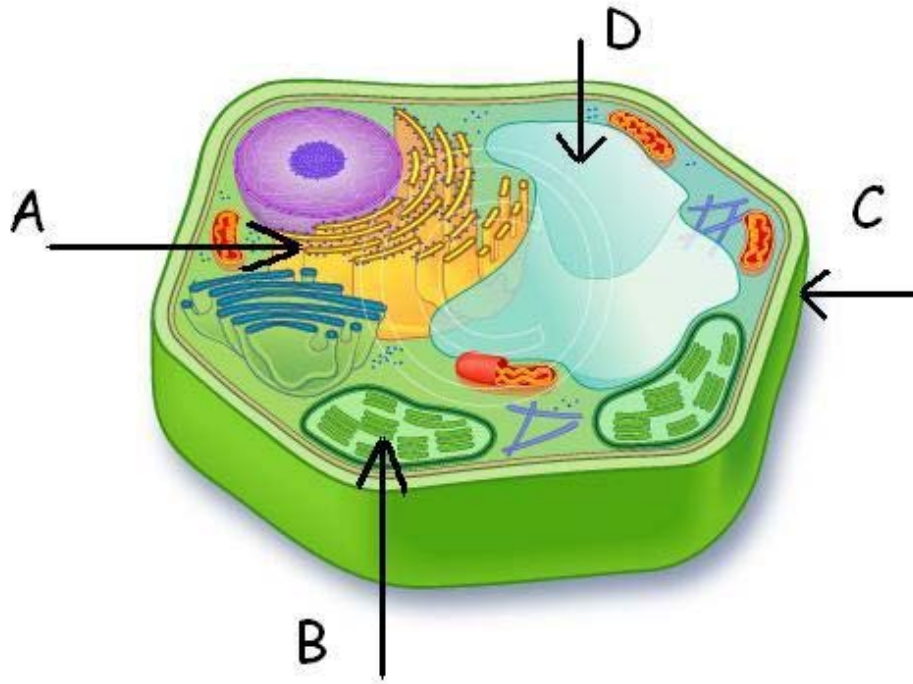


- Part A is the nucleus
- Part B is the nucleus
- Part C is the nucleus
- Part D is the nucleus

Question Prompt: 7

Total Points: 1

Use the diagram to decide which is the correct statement about Plant cells

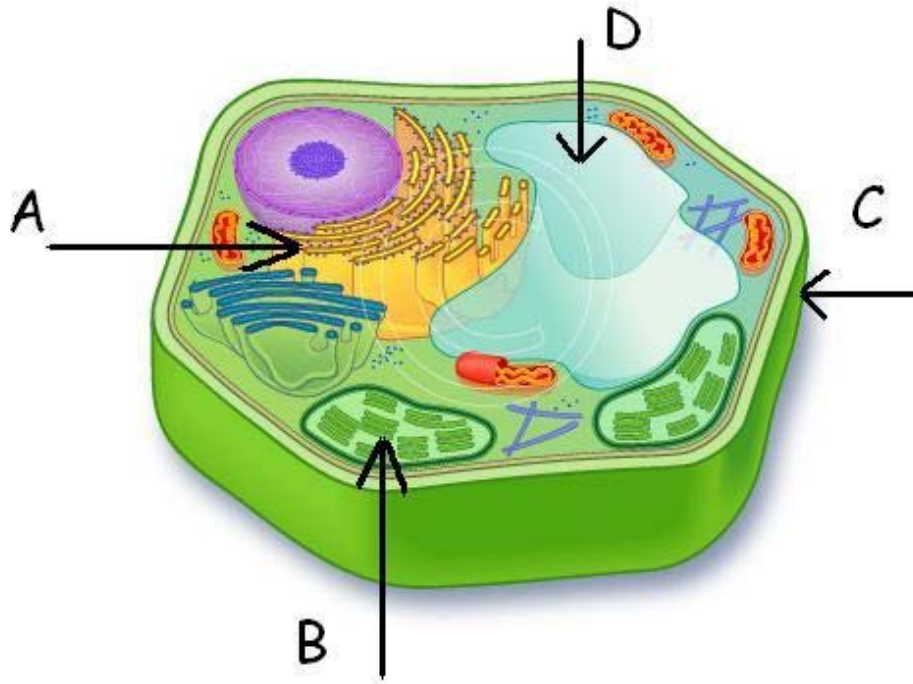


- Part A is the vacuole
- Part B is the vacuole
- Part C is the vacuole
- Part D is the vacuole

Question Prompt: 8

Total Points: 1

Use the diagram to say which statement about plant cells is correct



- Part A is the chloroplast
- Part B is the chloroplast
- Part C is the chloroplast
- Part D is the chloroplast

Question Prompt: 9

Total Points: 7

Points per answer: 1

Match each letter with the correct answer.

- | | |
|---|---------------------|
| A. Contains chlorophyll so plants can photosynthesis | 1. Nucleus |
| B. Contains the DNA instructions for the cell | 2. Mitochondira |
| C. Turns food into energy for the cell | 3. Cell Membrane |
| D. Is involved in modifying and exporting cell products | 4. Vacuole |
| E. Proteins are made at these | 5. Golgi structures |
| F. Contains fluids | 6. Ribosomes |
| G. Keeps water out of the cell | 7. Chloroplast |